

FY2017-2018 OPERATIONS & MAINTENANCE SEDIMENT CHARACTERIZATIONS

Heather Fourie
Dredged Material Management Office
Seattle District
26 April 2018

"The views, opinions and findings contained in this report are those of the author(s) and should not be construed as an official Department of the Army position, policy or decision, unless so designated by other official documentation."



US Army Corps
of Engineers®





Quillayute River

Port Townsend

Grays Harbor

Swinomish Channel

Snohomish River

Duwamish River

Completed in FY2018
In Progress



GRAYS HARBOR

>4M CY

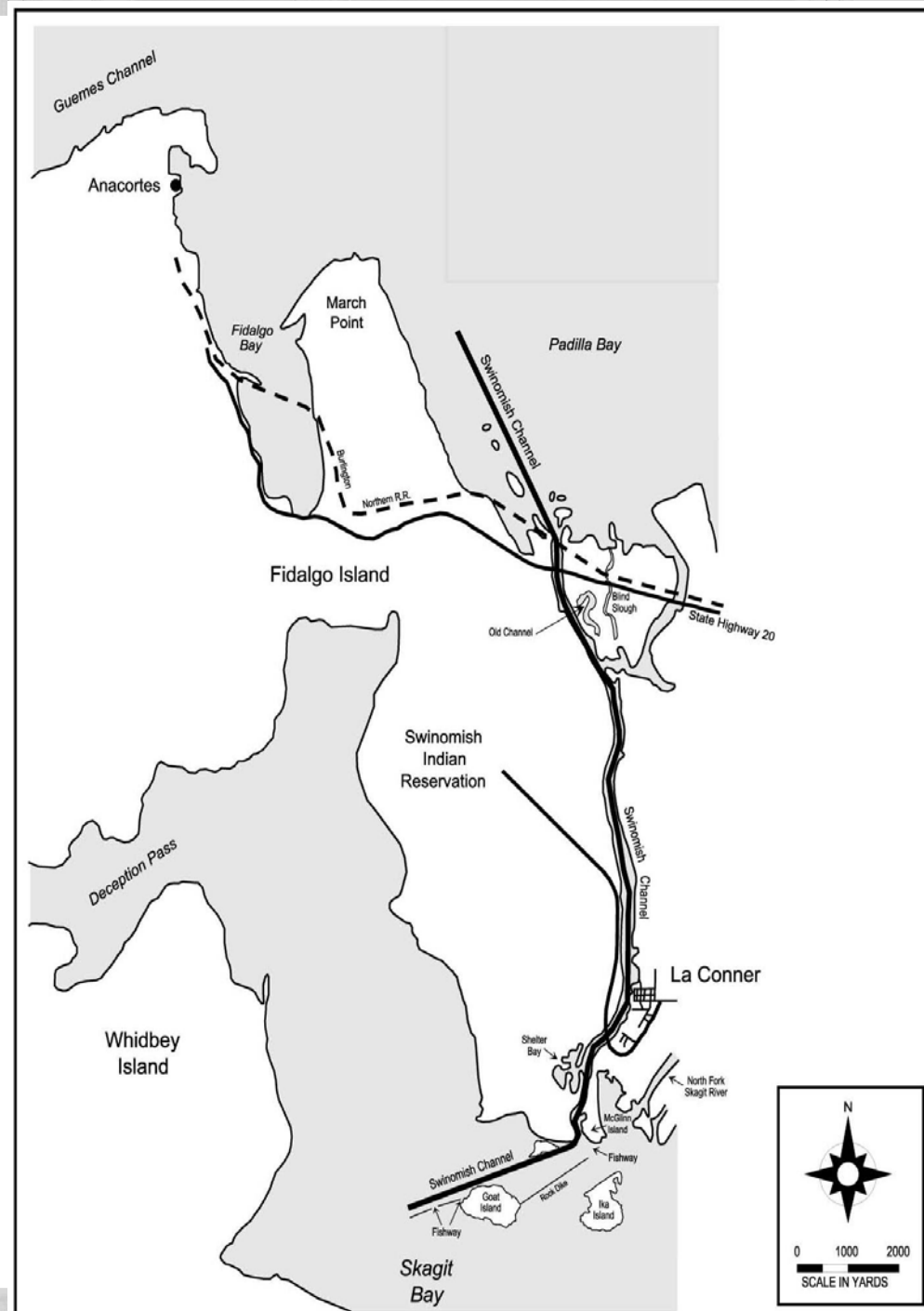
More than 250 grab samples

Suitable



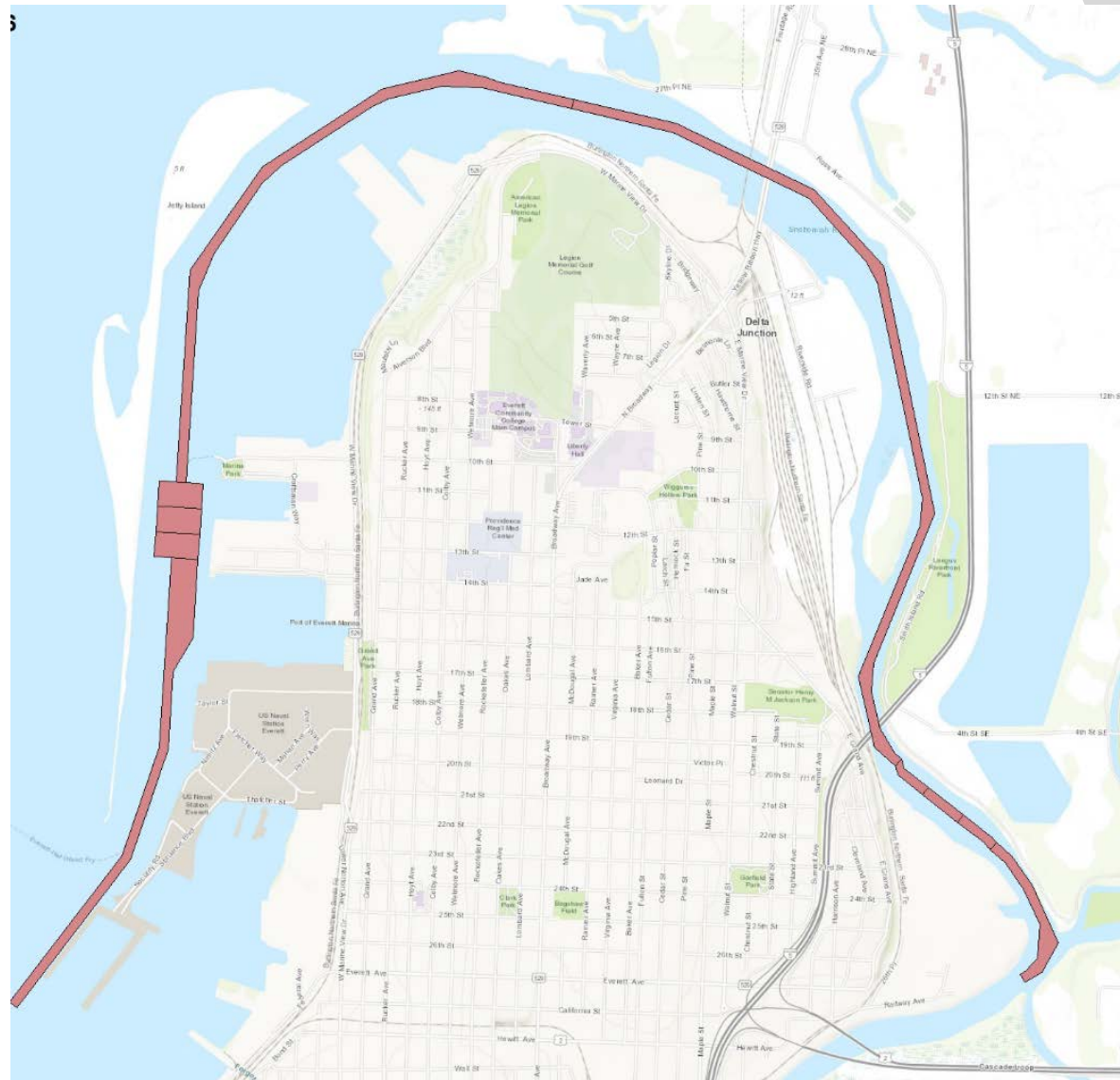
SWINOMISH CHANNEL

- 233,000 CY
- 4 DMMUs
- Suitable



SNOHOMISH RIVER

- ~800,000 CY
- 41 grab samples
- Suitable





QUILLAYUTE RIVER

Washington coast
56,805 CY



QUILLAYUTE RIVER

- 4 DMMUs
- Low to Moderate Rank
- Suitable

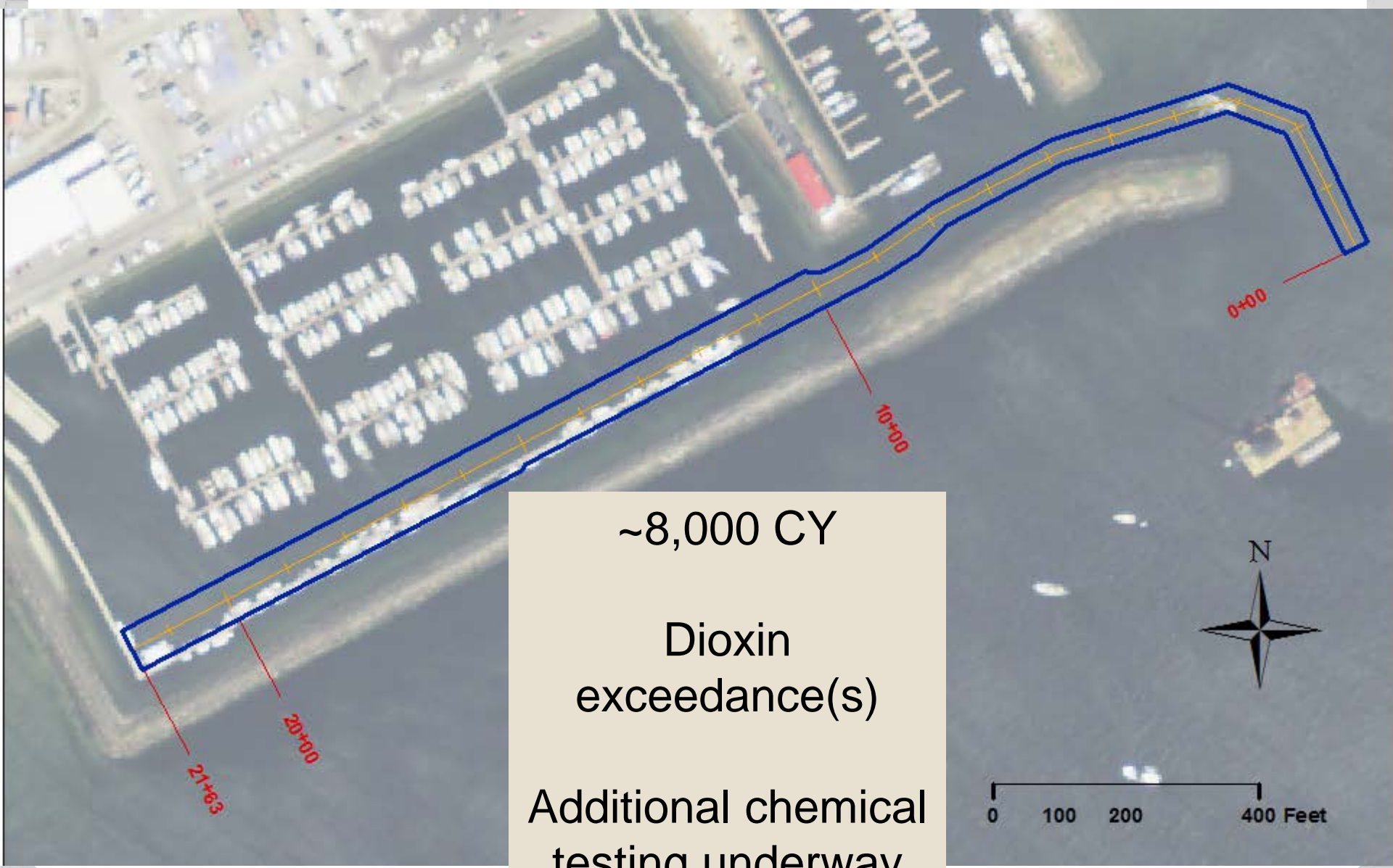




DUWAMISH RIVER

- ~115,000 CY
- Bioassays were required for 3 of 13 DMMUs.
- All bioassay tests **passed** DMMP guidelines.
- Suitable

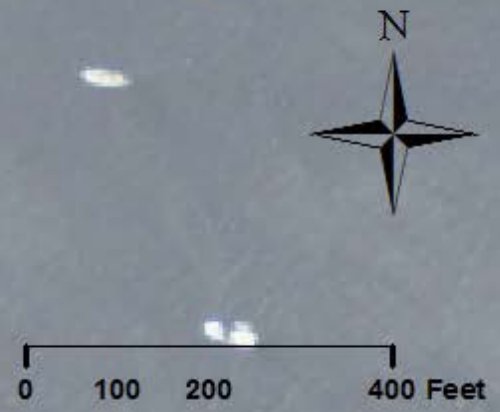
PORT TOWNSEND



~8,000 CY

Dioxin
exceedance(s)

Additional chemical
testing underway



COMMENCEMENT BAY SEDIMENT PROFILE IMAGING



- Summer 2017

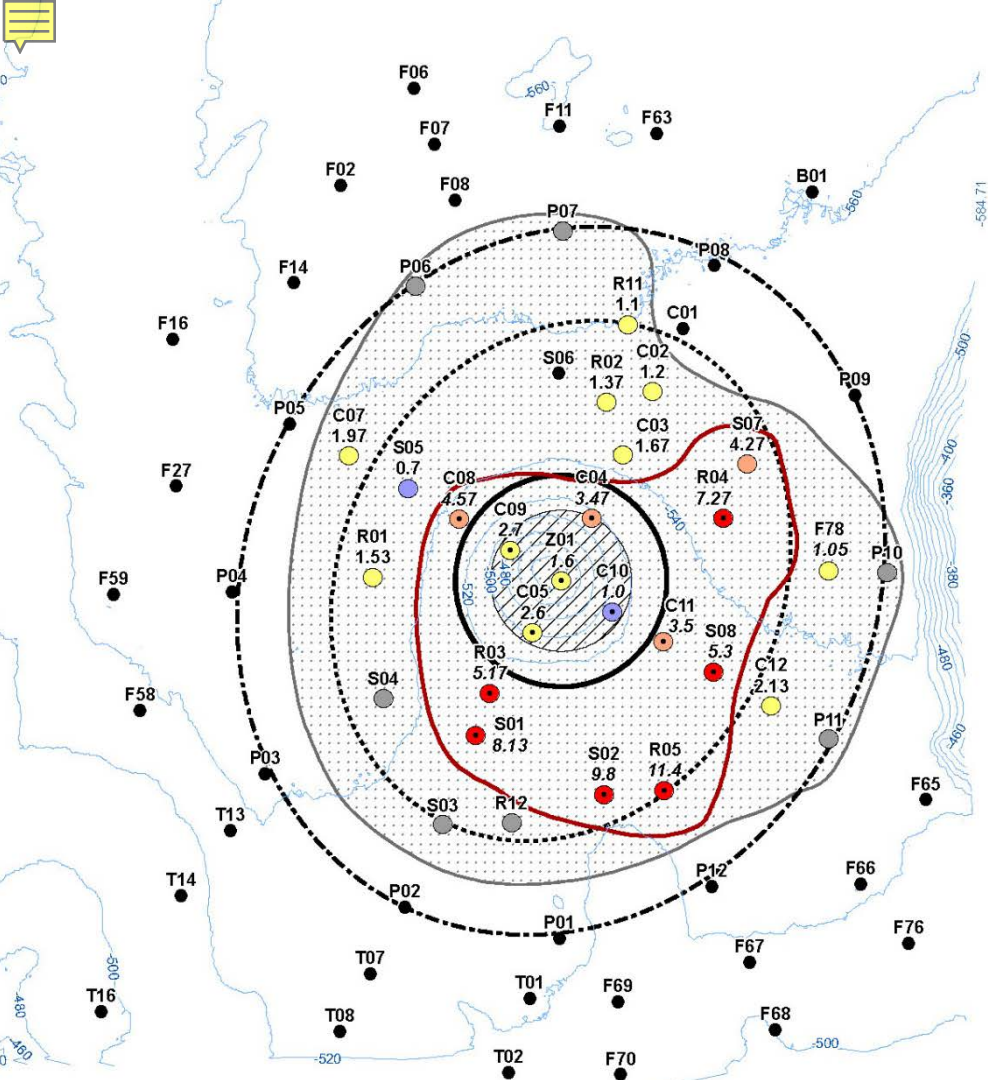


US Army Corps
of Engineers[®]





Commencement Bay Disposal Site



- Physical, chemical, and biological monitoring required every 500,000 CY of material disposed.
- 68 stations samples in 2017 by Integral Consulting
- Red line = 3 cm depth

Conclusion: Dredged material is staying on-site

Dredged Material Thickness (cm)

- 5.1 - 11
- 3.1 - 5.0
- 1.1 - 3.0
- 0.70 - 1.0
- Trace
- None

- Dredged Material Layer > Penetration Depth (##)
- >3 cm Contour
- Dredged Material Footprint
- 2016 Bathy Contours (20 foot)
- Target Area
- Disposal Zone
- Disposal Site
- Disposal Perimeter

Bathymetric Source:
US Army Corps of Engineers, 2016



SEDIMENT CHARACTERIZATION STATUS

Project	Area Covered	Status
Snohomish River	Settling basins and navigation channel	Suitability complete; Suitable
Grays Harbor	Bar Channel to South Aberdeen	Suitability complete; Suitable
Duwamish	Turning basin and adjacent channel	Sampling & bioassays complete; awaiting final report
Swinomish Channel	Entire channel	Suitability complete; Suitable
Quillayute	Boat basin and navigation channel	Suitability complete; Suitable
Port Townsend	Navigation channel	Awaiting additional chemistry data



US Army Corps
of Engineers[®]

