

# PUYALLUP RIVER BASIN FLOOD RISK MANAGEMENT GENERAL INVESTIGATION

## Public Meeting

U.S. Army Corps of Engineers, Seattle District

19 April 2016



# Agenda

- Corps and Pierce County Opening Remarks
- General Investigation (GI) Overview
- GI Progress Report
- Basin / Study Area Background
- Tentatively Selected Plan Overview
- Overview of Environmental Analysis
- Next Steps
- Formal Comment Period for Draft Report



**BUILDING STRONG®**

# Purpose of Meeting

- Provide an overview of work completed to date, including identification of a tentatively selected plan
- Allow the public, stakeholders, and agency representatives to provide formal comments on the draft feasibility report / EIS and recommended plan by the May 9, 2016 public review deadline



**BUILDING STRONG®**

# General Investigation Overview

The Puyallup River Basin General Investigation (GI) Study is an analysis which will:

- ▶ Identify flood risk problems in the Puyallup River Basin
- ▶ Identify, evaluate, and recommend flood risk management actions to address these problems



**BUILDING STRONG®**

# Progress Report

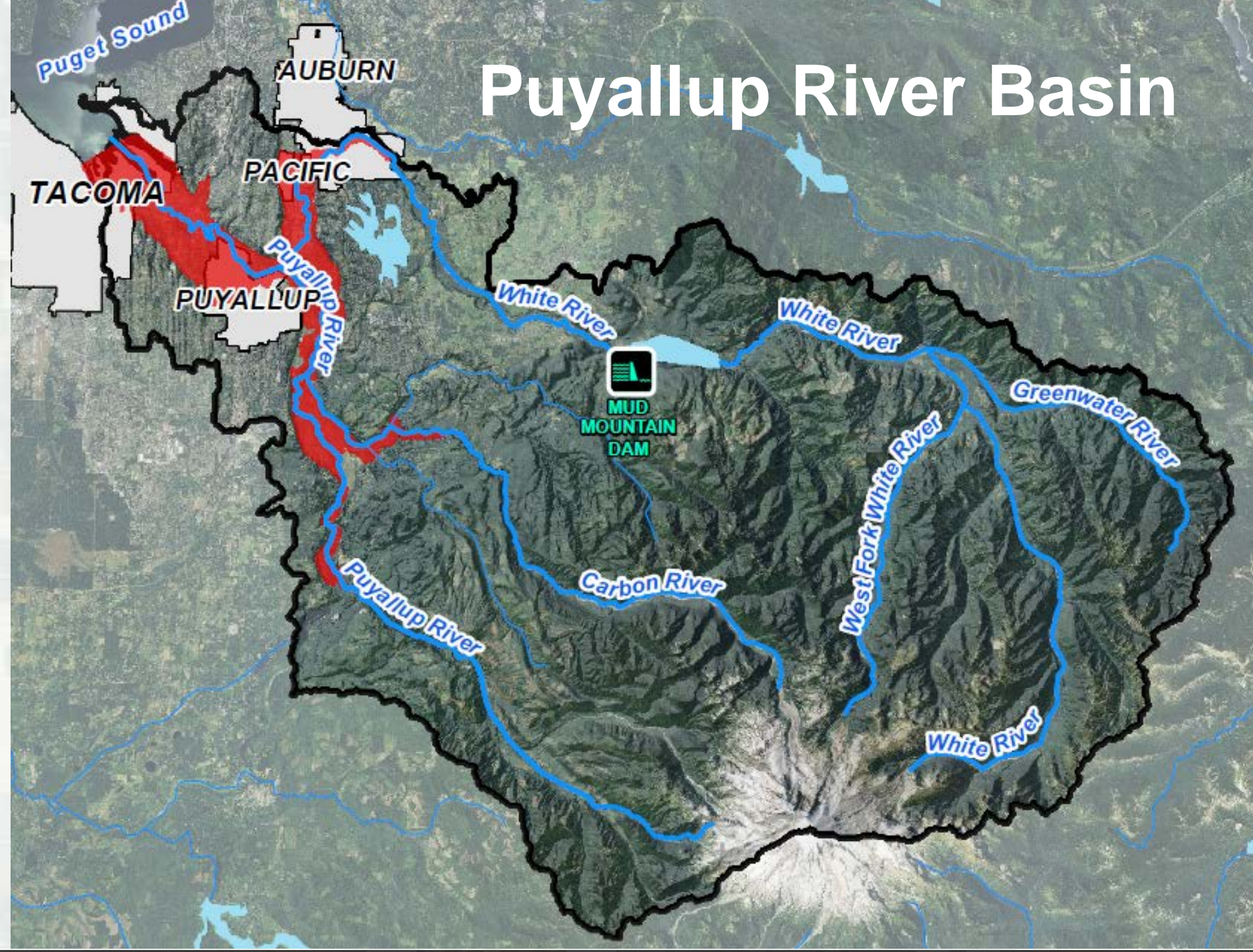
- Identification of Tentatively Selected Plan
- Draft Feasibility Report / Environmental Impact Statement includes:
  - ▶ Identification of problems
  - ▶ Formulation & evaluation of alternatives
  - ▶ Includes conceptual designs & cost estimates
  - ▶ Analysis of environmental impacts



**BUILDING STRONG®**



# Puyallup River Basin

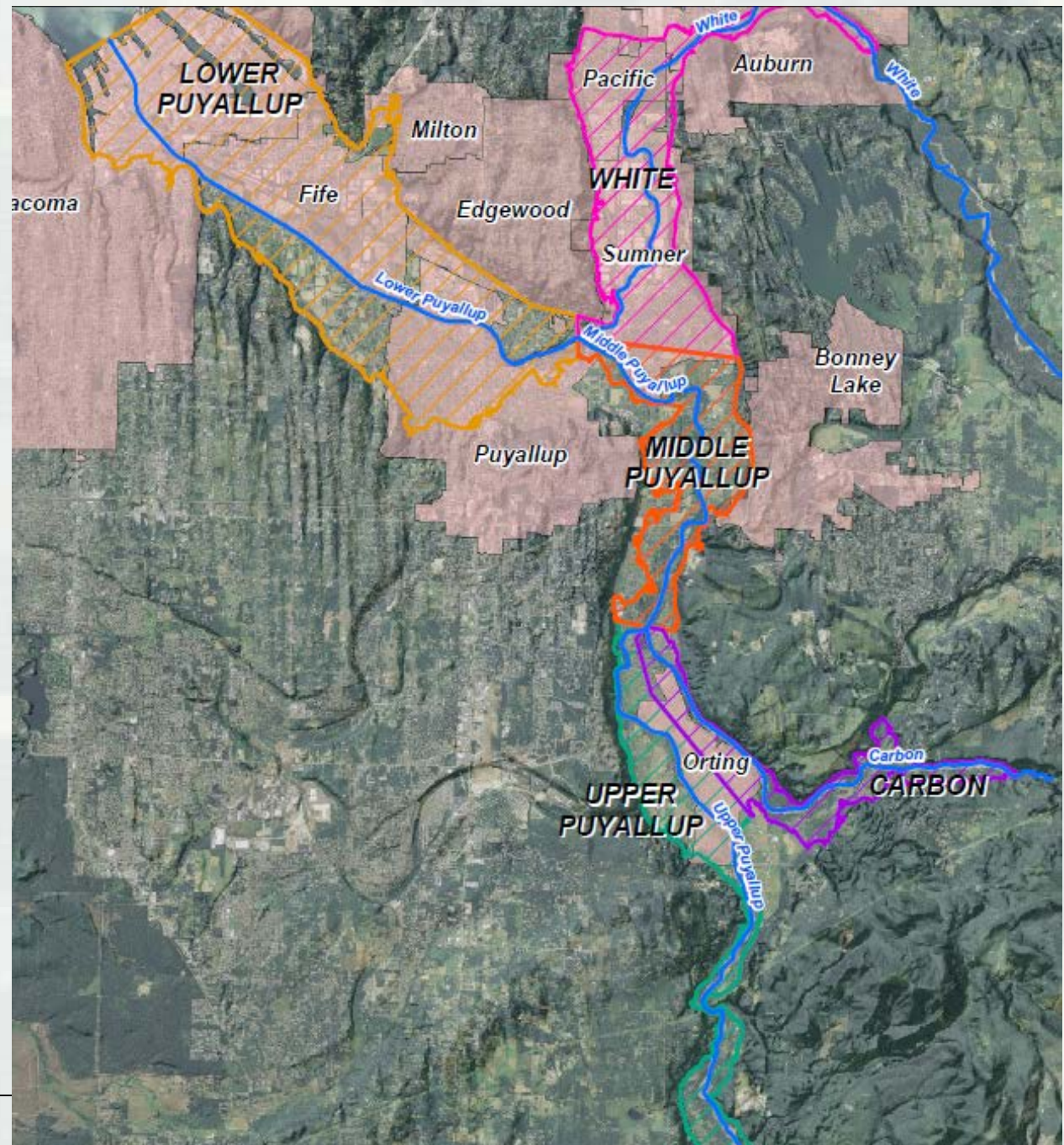




# Study Area

Five reaches for purpose of analysis

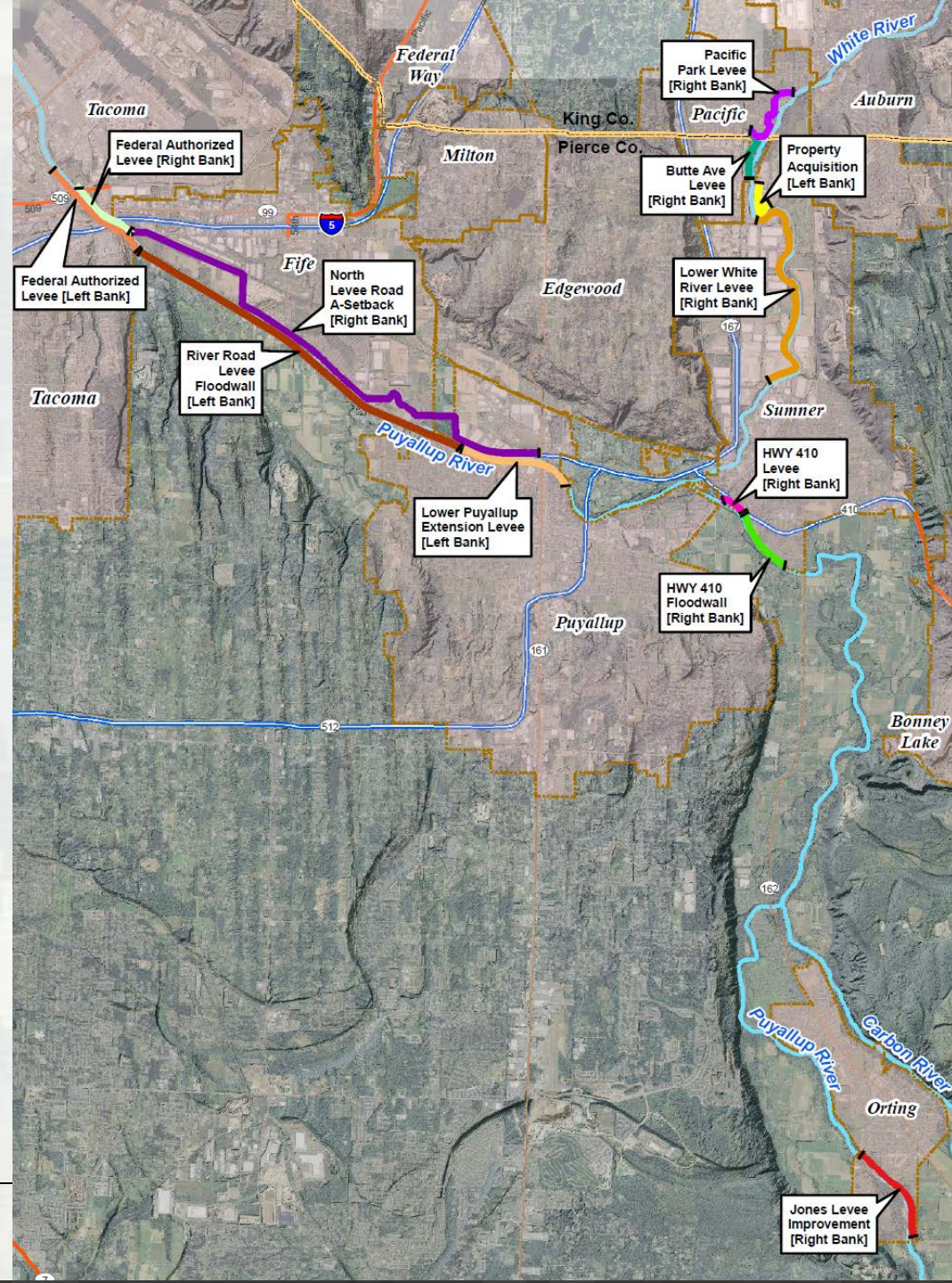
- Lower Puyallup
- Middle Puyallup
- Upper Puyallup
- White River
- Carbon River





# Tentatively Selected Plan: Levee Modification Alternative

- Levee Modification Alternative
- 11.2 mi of new levee and/or floodwall construction
- 8.7 mi of modification to existing features, setbacks
- \$341.1M estimated first cost
- 2.5 benefit-cost ratio





# Overview of Environmental Analysis

- Hydraulics and Hydrology
- Geomorphology and Sediment Transport
- Water Quality and Quantity
- Air Quality
- Greenhouse Gas Emissions
- Climate Change and Sea Level Change
- Noise
- Hazardous, Toxic, and Radiological Waste
- Fish and Wildlife
- Wetlands Habitat
- Riparian Habitat
- Aquatic Habitat
- Soil Resources
- Threatened, and Endangered Species
- Socio-Economics
- Cultural Resources
- Environmental Justice Communities
- Aesthetics
- Land Use, Planning and Zoning
- Agricultural Resources
- Public Services and Utilities
- Public Health and Safety
- Transportation and Traffic



# Next Steps



*\*Subject to Congressional authorization of project and funding appropriations*



# Tonight's Formal Comment Period

- Please sign-in to submit a verbal comment
- Verbal comments are limited to 2 minutes per person
- State and spell your name before providing your comment
- Please limit comments to the flood risk management study
- Verbal comments will be recorded for the formal record and printed in the final report
- Written comments are also welcome – comment cards are in the back of the room
- Answers or responses will not be provided during the comment period. Responses will appear in the final report.



**BUILDING STRONG®**

# We Want Your Input

## In Person:

Tonight's meeting

## By E-mail:

PuyallupComments@usace.army.mil

## By Mail:

Mr. Scott Long

U.S. Army Corps of Engineers

CENWS-PM-PL

P.O. Box 3755

Seattle, WA, 98124

Draft report is available in the  
Puyallup and Orting libraries and  
online at:

<http://tinyurl.com/PuyallupRiverGI>

**Comments must be received or postmarked by May 9, 2016**



**BUILDING STRONG®**