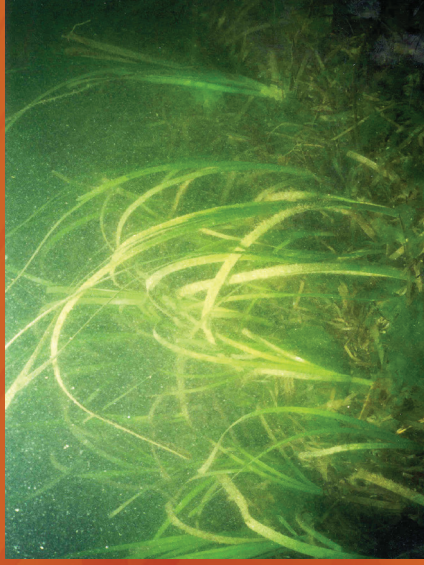




Pacific Northwest
NATIONAL LABORATORY

Proudly Operated by Battelle Since 1965



20% More Eelgrass (*Zostera marina*) by 2020; Restoration Site Selection and Testing, and Resolving Regulatory and Social Barriers to Conservation and Recovery

LARA ASTON

Marine Sciences Division – Coastal Ecosystem Research Group
Sequim, WA

January 24, 2013

Project Team



Pacific Northwest
NATIONAL LABORATORY

Proudly Operated by Battelle Since 1965

The Washington Department of Natural Resources (DNR) sponsors our project. This project is lead by scientific staff at DNR who presently conduct the eelgrass monitoring and research program within DNR. The Marine Sciences Laboratory of the Department of Energy's Pacific Northwest National Laboratory is a major partner with DNR for this work.

- ▶ DNR – Jeff Gaeckle, Helen Berry, Fred Short
- ▶ EPA – Jim Kaldy
- ▶ PNNL – Ron Thom, John Vavrinec, Amy Borde, Kate Buenau, Lyle Hibler, Dana Woodruff, Chaeli Judd, Lara Aston, Tarang Khangaonkar, and Wen Long

Puget Sound Marine and Nearshore Protection and Restoration Grant Program

January 24, 2013

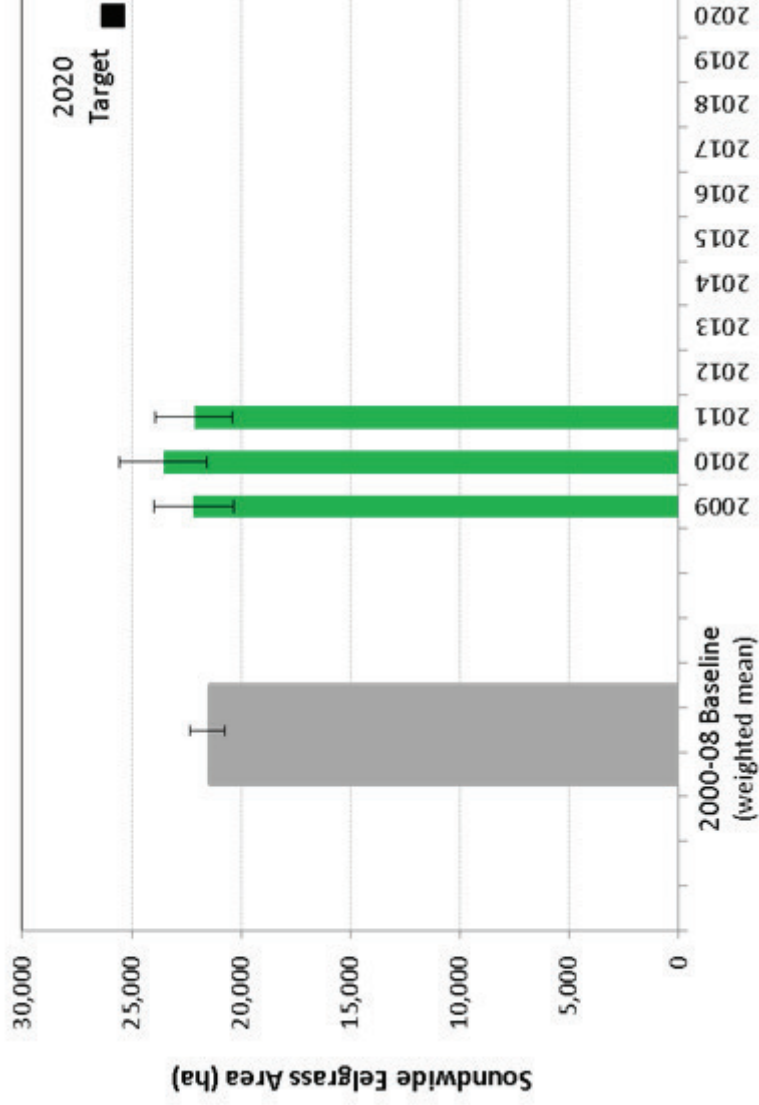
Rationale



Pacific Northwest
NATIONAL LABORATORY

Proudly Operated by Battelle Since 1965

In response to the regional and global need, the Puget Sound Action Agenda specifically targets the restoration of 20% more eelgrass by 2020 (PSP 2012).



Rationale



Pacific Northwest
NATIONAL LABORATORY

Proudly Operated by Battelle Since 1965

Our project is part of the Action Agenda’s strategy to “implement a coordinated strategy to achieve the 2020 eelgrass recovery target”(PSP 2012).

- ▶ **Strategy B2.4 Near-Term Action 1: Identification of Eelgrass Restoration Sites:** DNR will identify and recommend sites that are suitable for eelgrass restoration in Puget Sound. Sites will be selected using habitat suitability analysis, hydrodynamic modeling, and eelgrass resilience to local stressors. This will include identification of sites on state-owned aquatic lands with a focus on areas with long-term protections already in place.

Project Objectives



Pacific Northwest
NATIONAL LABORATORY
Proudly Operated by Battelle Since 1965

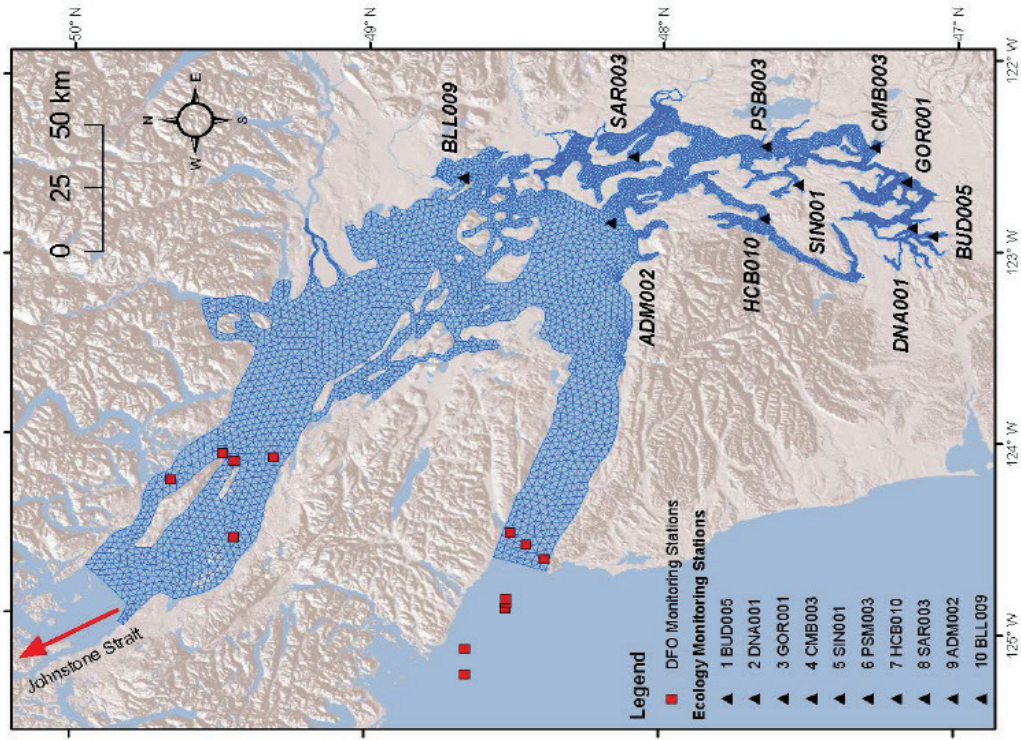
Overall goal: locate sites within Puget Sound and the Strait of Juan de Fuca suitable for successful eelgrass (*Zostera marina*) meadow restoration, with specific focus to identify sites that would be conserved from future anthropogenic disturbances and resilient to climate change.

- ▶ Assess through modeling and field studies potential sites for eelgrass restoration
- ▶ **Through discussions with local and regional planners evaluate and recommend potential management actions to restore and conserve eelgrass**
- ▶ Produce maps and characterize the projected increase in eelgrass areal extent that provide specific location for eelgrass restoration
- ▶ Deliver recommendations on suitable transplant sites and management actions to restore 20% more eelgrass in Puget Sound

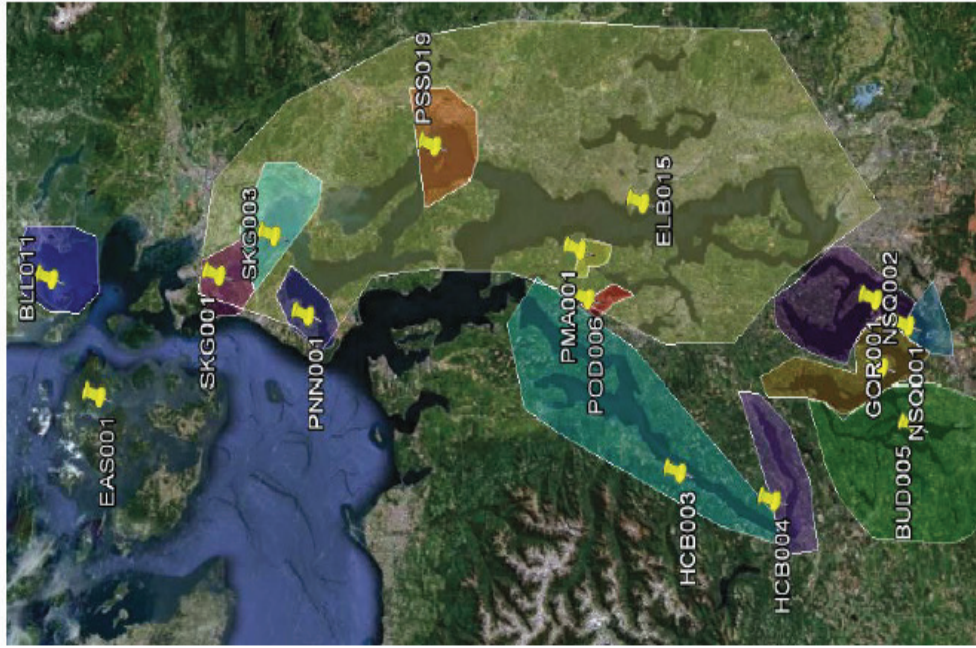
Modeling



Pacific Northwest
NATIONAL LABORATORY
Proudly Operated by Battelle Since 1965



January 24, 2013

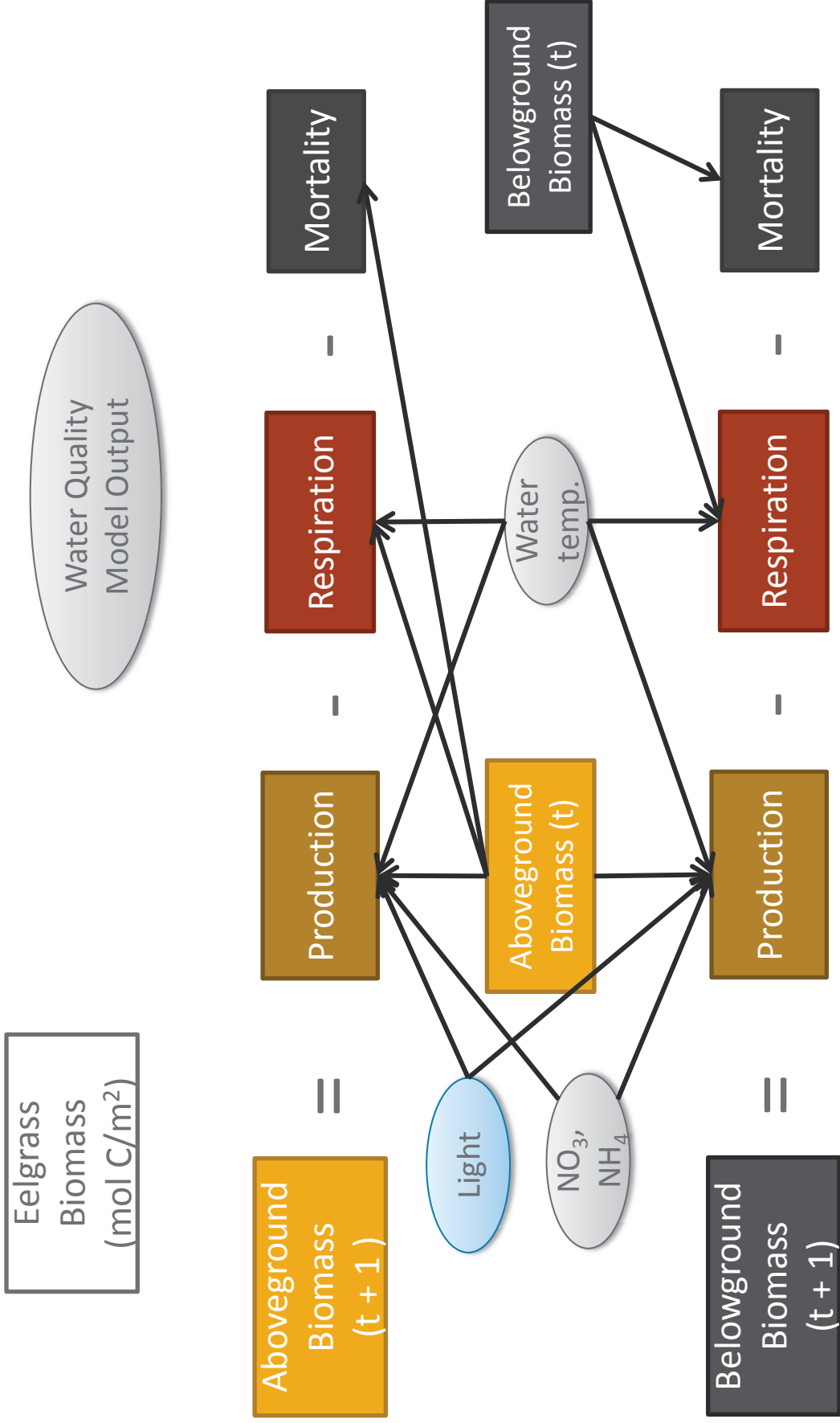


Eelgrass Biomass Model



Pacific Northwest
NATIONAL LABORATORY

Proudly Operated by Battelle Since 1965

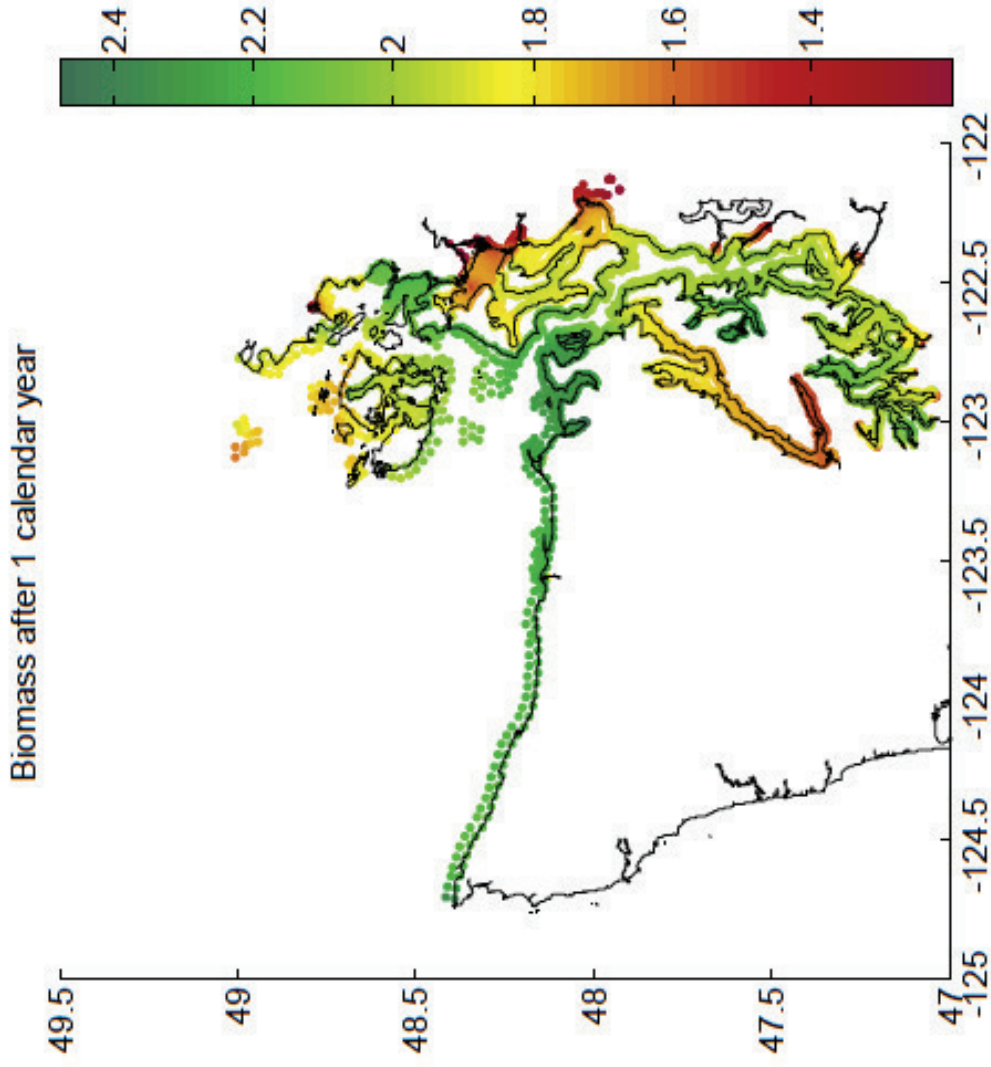


Eelgrass Biomass Model



Pacific Northwest
NATIONAL LABORATORY

Proudly Operated by Battelle Since 1965



Similar measures

Area Increasing /Constant biomass per site
Total area in the correct depth range

Historical Eelgrass Presence
Has eelgrass been present at site in the past?

DNR current surveyed areas
Is it there currently?

DNR current surveyed areas
Does % cover seem light?

Erosion Index (USGS)

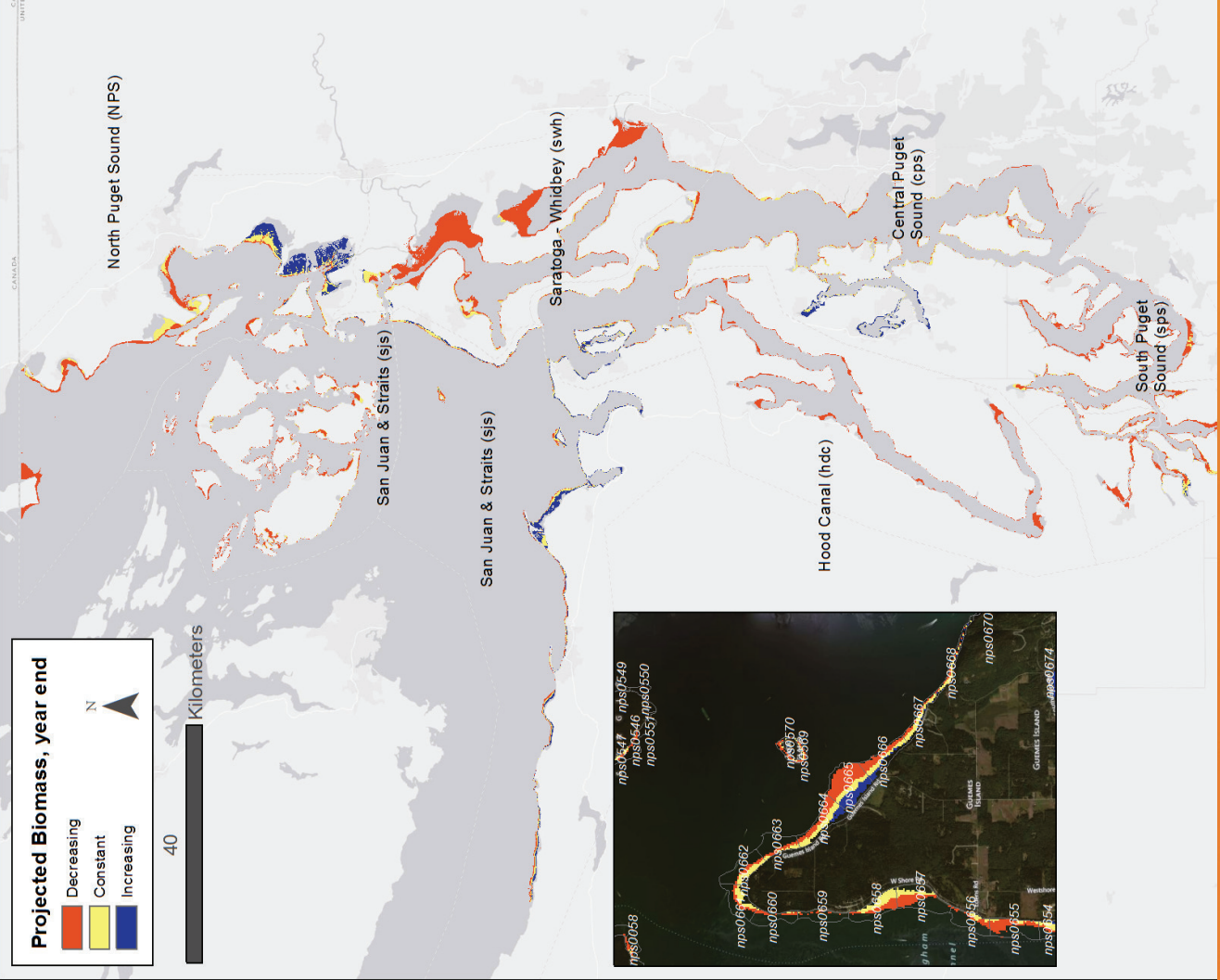
Stress Level (NOAA)

Identify potential areas for restoration

potential

Is it restoration?

Other limits?



Field Visit to Areas of Interest



Pacific Northwest
NATIONAL LABORATORY

Proudly Operated by Battelle Since 1965

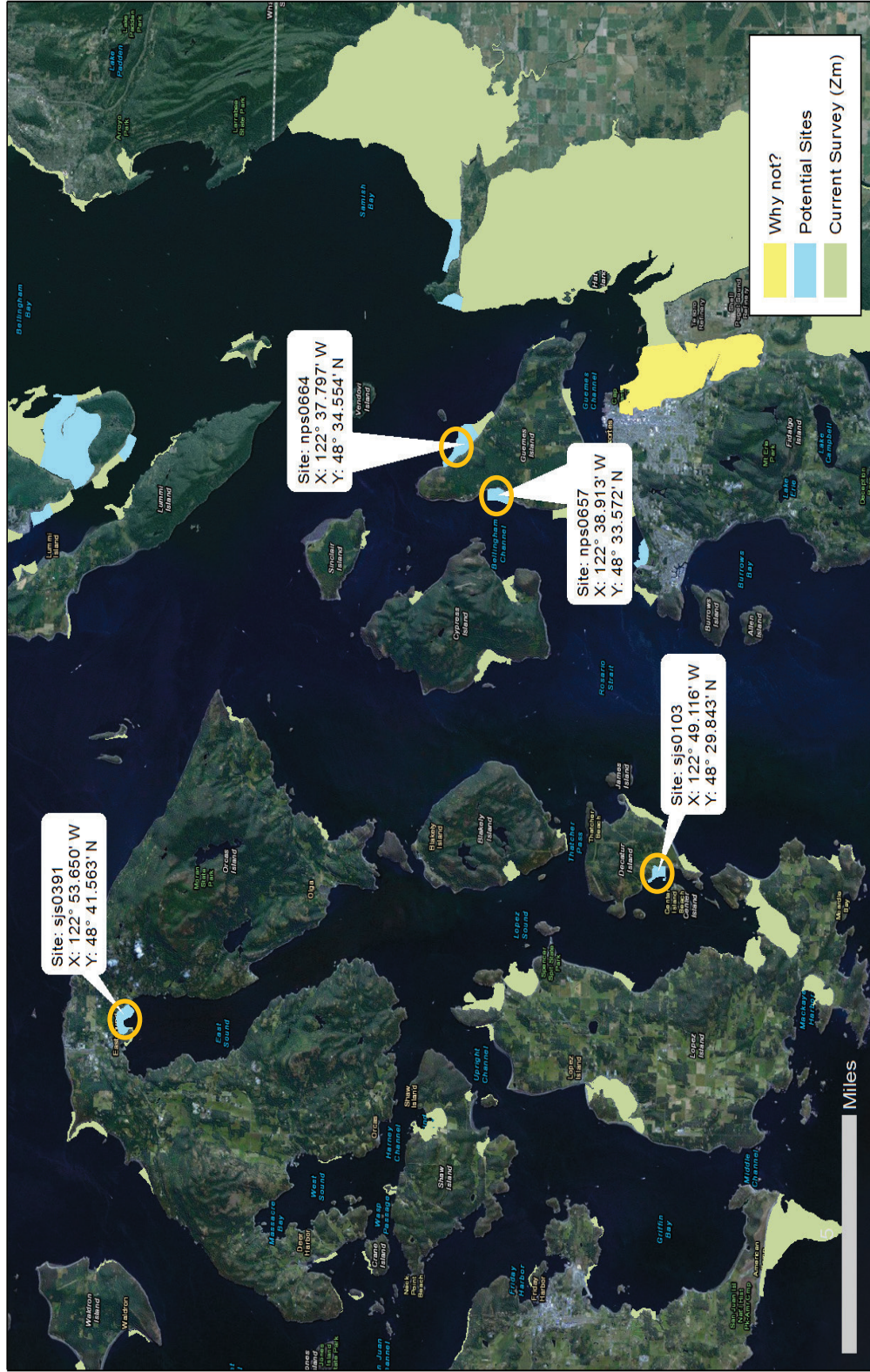


San Juan Islands



Pacific Northwest
NATIONAL LABORATORY

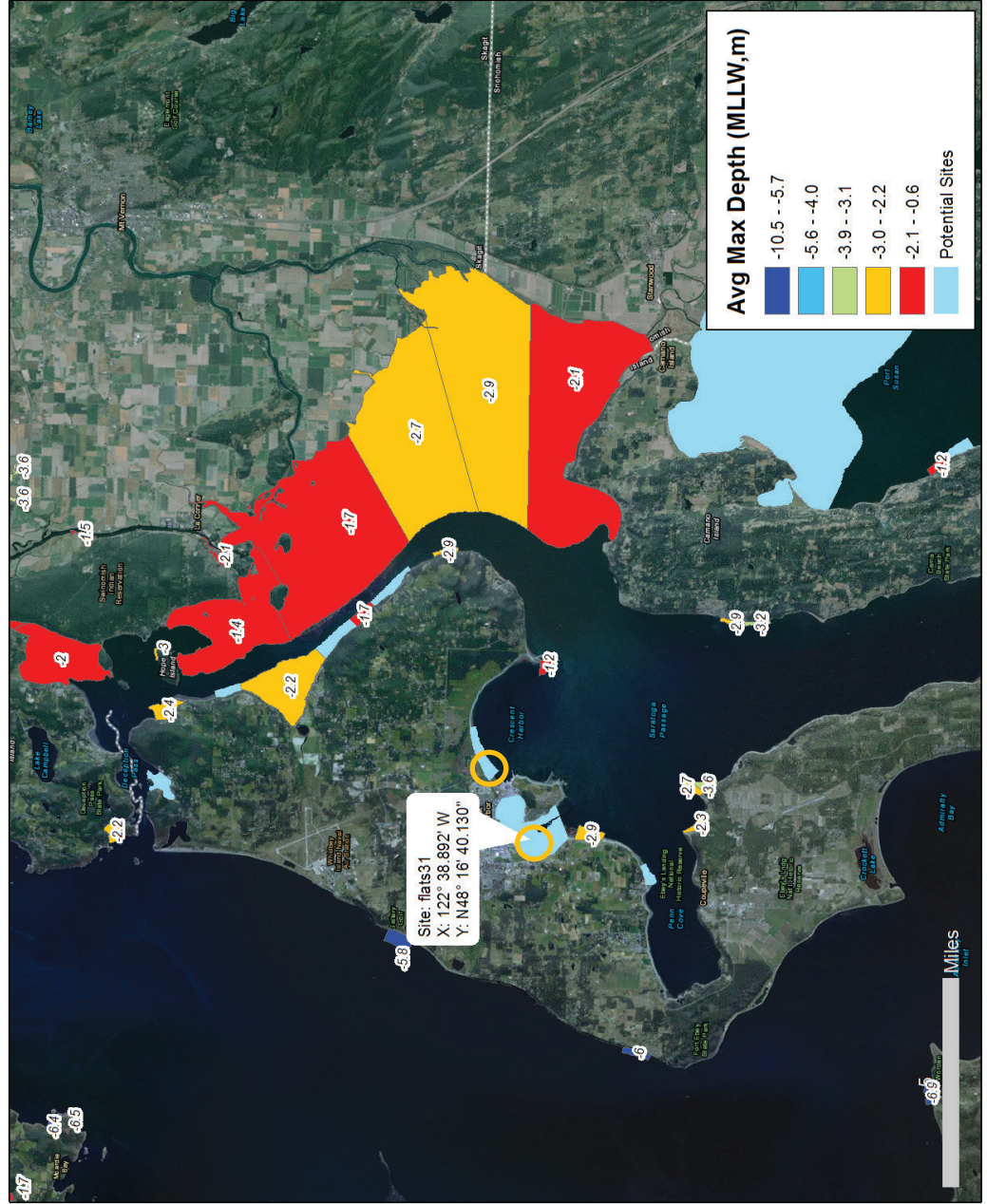
Proudly Operated by **Battelle** Since 1965



Whidbey Island



Pacific Northwest
NATIONAL LABORATORY
Proudly Operated by Battelle Since 1965

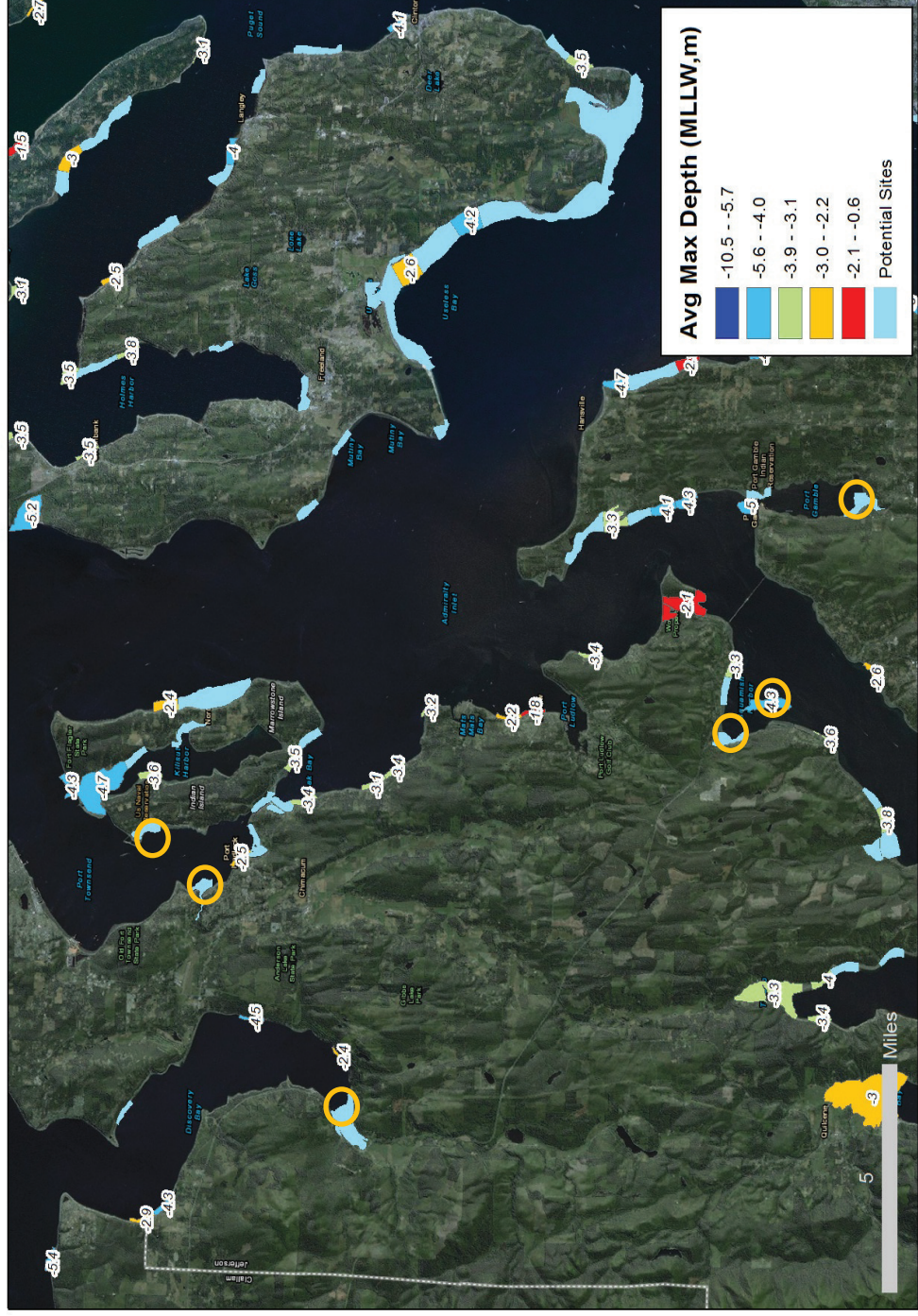


Hood Canal – Strait of Juan de Fuca



Pacific Northwest
NATIONAL LABORATORY

Proudly Operated by Battelle Since 1965

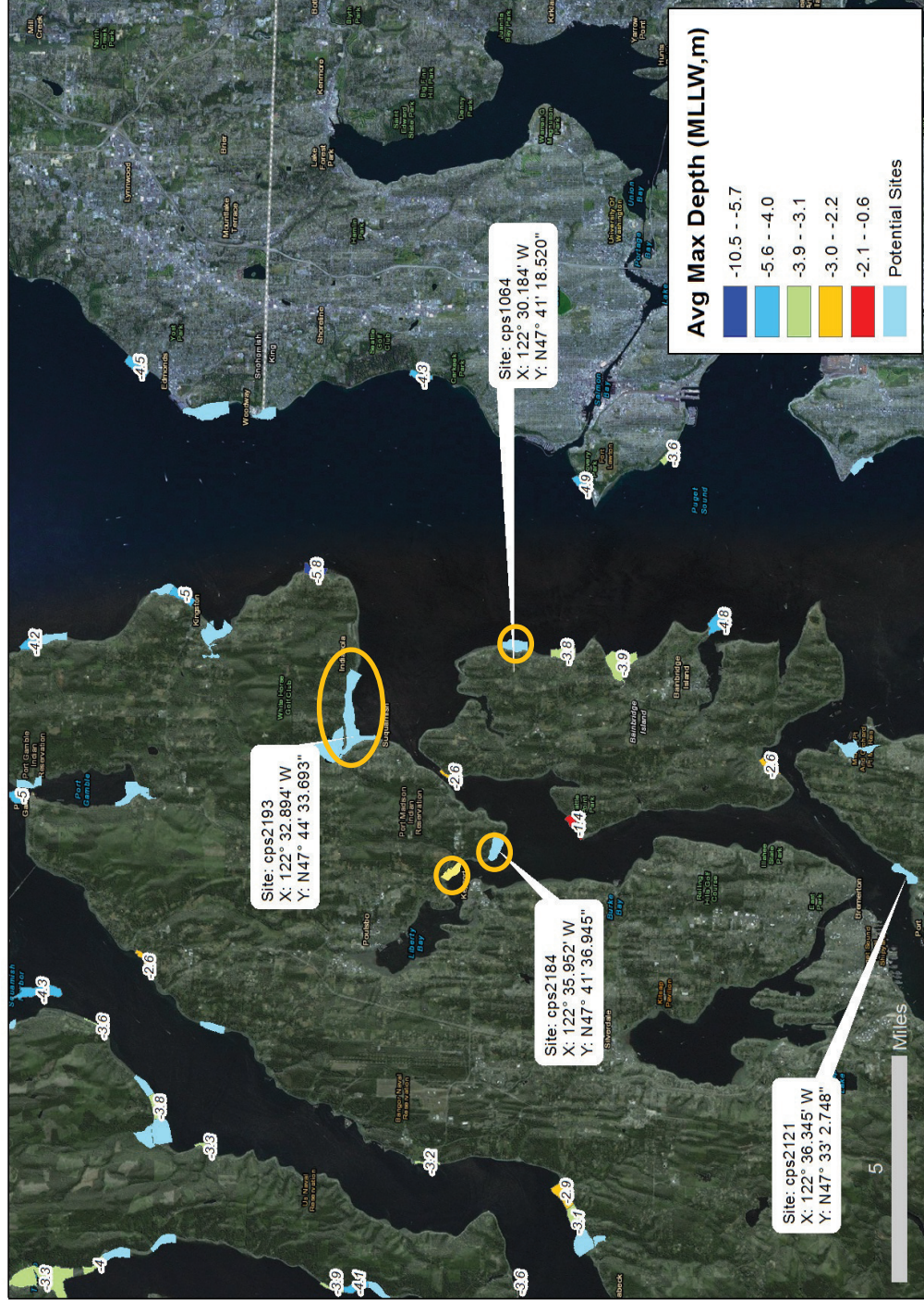


East Kitsap County



Pacific Northwest
NATIONAL LABORATORY

Proudly Operated by **Battelle** Since 1965

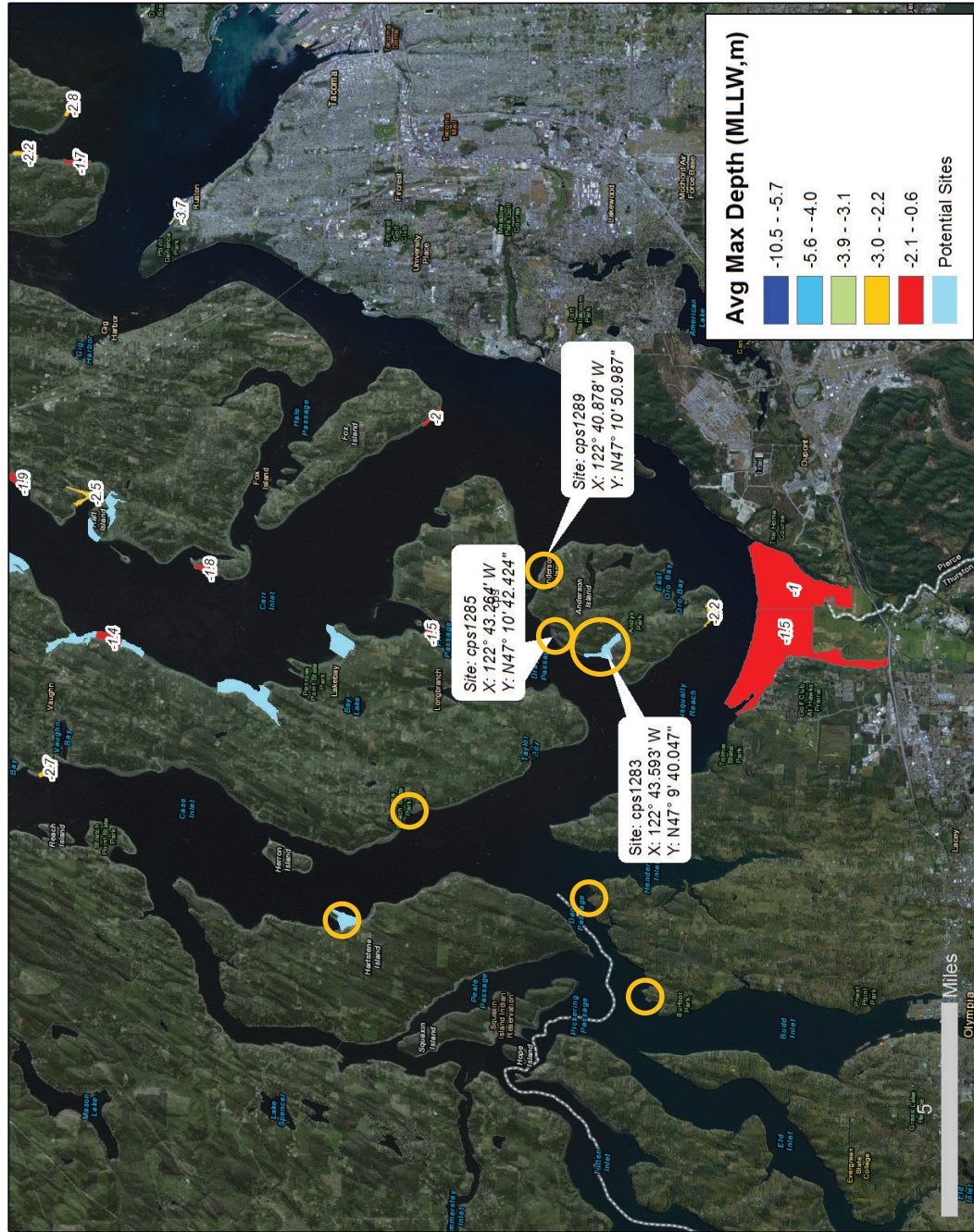


South Sound



Pacific Northwest
NATIONAL LABORATORY

Proudly Operated by Battelle Since 1965



Field Visit to Areas of Interest



Pacific Northwest
NATIONAL LABORATORY

Proudly Operated by Battelle Since 1965



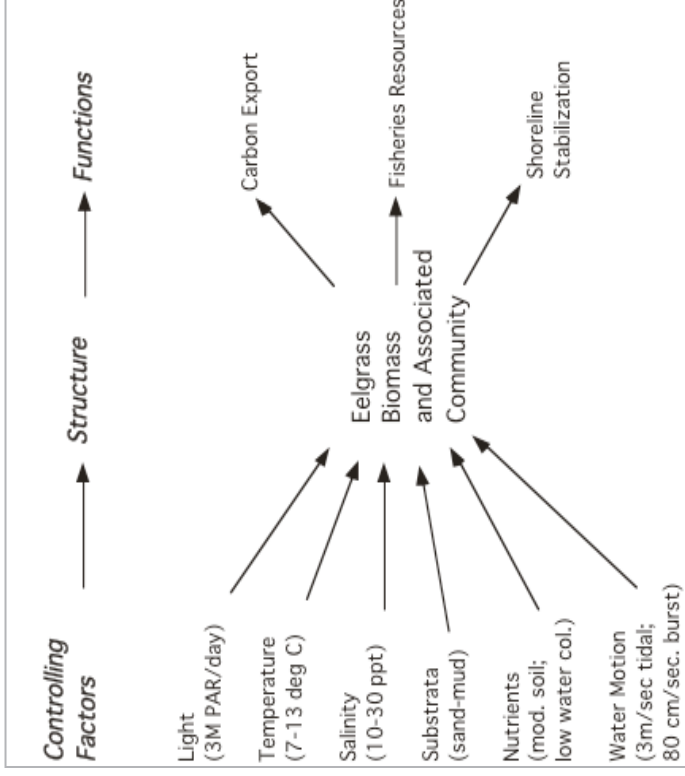
- ▲ Presence/Absence for eelgrass
- ▲ Appropriate depth
- ▲ Appropriate substrate
- ▲ Other site characteristics (ex. fetch, shoreline grade)
- ▲ Any obvious potential stressors

Next Step – Acquire Additional Data



Pacific Northwest
NATIONAL LABORATORY

Proudly Operated by Battelle Since 1965



Conceptual model showing eelgrass controlling factors with ranges of values (Thom et al. 2005).

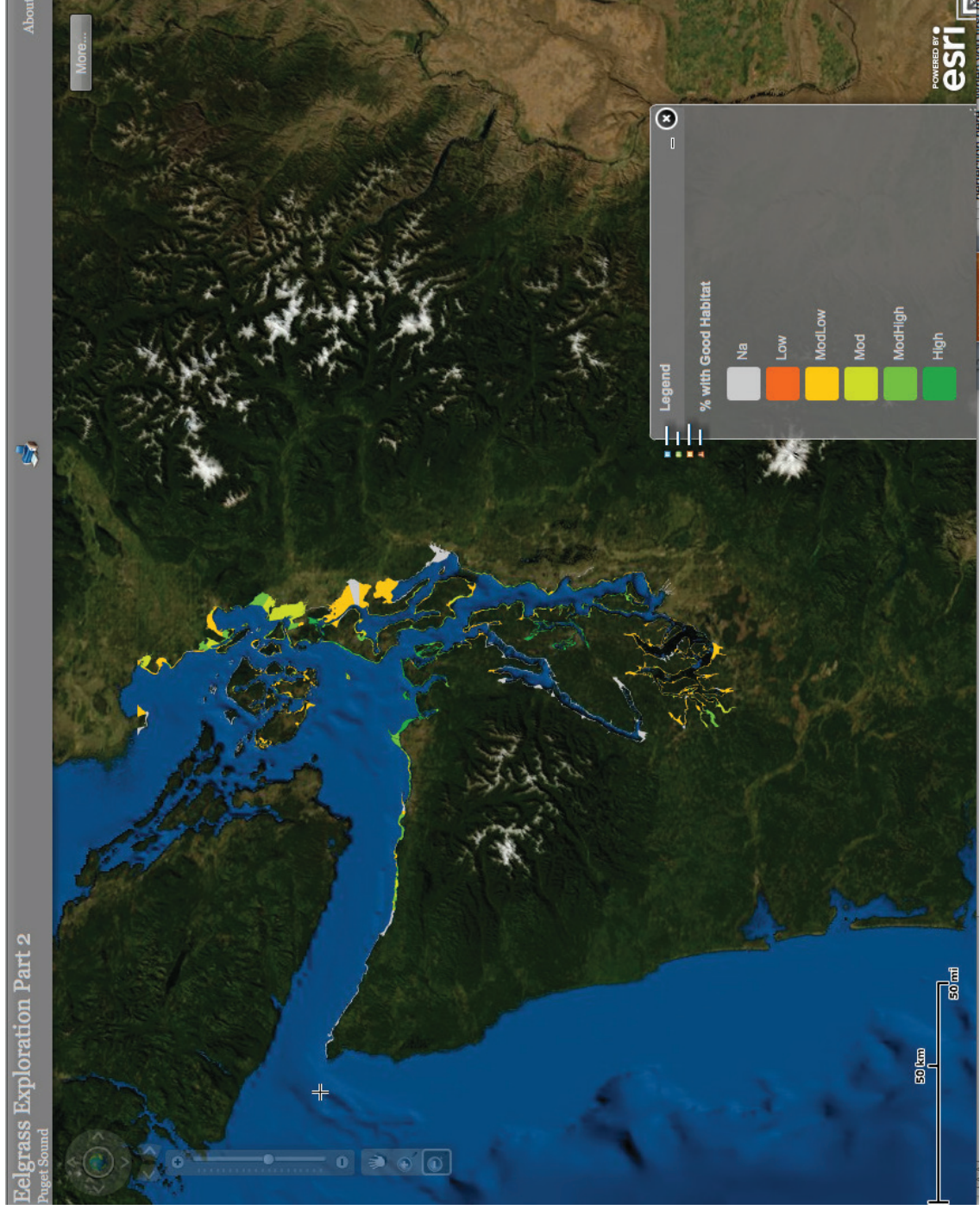
- ▶ Identify potential sites the model did not select
- ▶ Further refine (filter) model outputs
- ▶ Assist in prioritizing sites
- ▶ Identify known stressor abatement activities that need to be performed prior to restoration
- ▶ Address barriers to effective regulation and stewardship of eelgrass

We would like your input



Pacific Northwest
NATIONAL LABORATORY

Proudly Operated by Battelle Since 1965



January 24, 2013

Thank you

For more information contact:

Jeff Gaeckle
Washington Department of Natural Resources
360-902-1030
jeffrey.gaeckle@dnr.wa.gov

Lara Aston
Marine Sciences Laboratory – Pacific Northwest National Laboratory
360-681-4557
lara.aston@pnnl.gov

“This project has been funded wholly or in part by the United States Environmental Protection Agency under assistance agreement PC 00J29801 to Washington Department of Fish and Wildlife. The contents of this document do not necessarily reflect the views and policies of the Environmental Protection Agency, nor does mention of trade names or commercial products constitute endorsement or recommendation for use.”



Pacific Northwest
NATIONAL LABORATORY

Proudly Operated by Battelle Since 1965



January 24, 2013